



# Gable Grants Applicant Webinar



# Agenda

1. Lowe's Foundation History
2. Gable Grants Overview
3. Eligibility and Selection Process
4. Application Portal



# Lowe's Foundation History

- Founded in 1957 as the Lowe's Charitable & Educational Foundation
- 501(c)(3) public charity organization with an independent board of directors
- In 2019, the Foundation changed its name to the Lowe's Foundation
- The Gable Grants program launched in 2023 to help address challenges in the skilled trades workforce



# The Lowe's Foundation has a bold commitment in skilled trades



*A bold, ambitious goal with a huge impact...*

Prepare **50,000** people for skilled trades careers over **5 years** through a **\$50 million** investment



# Lowe's Foundation Gable Grants

**\$50M commitment over 5 years to prepare 50,000 individuals for skilled trades careers**



**Community & technical colleges**  
*2-yr grants; March 2024*

**Community-based nonprofits**  
*2-yr grants; August 2024*

**National nonprofit partners**  
with strong local presence  
*Annual grants*

- ✓ Support innovative skilled trades programs in construction, electrical, HVAC, plumbing and appliance repair
- ✓ Prioritize programs that offer scalable skilled trades training programs
- ✓ Create a sustainable infrastructure of skilled trades education and training
- ✓ Raise awareness of skilled trades careers for all, including (but not limited to) women, people of color, people in rural areas and individuals participating in second-chance programs

# Eligibility Criteria

Organizations applying for Gable Grants must qualify as a community and technical college or community-based nonprofit organization in the United States:

## **Community & Technical Colleges:**

A community or technical college that is a public institution of higher education as defined in Section 101(a) of the Higher Education Act, and at which the associate degree is primarily the highest degree awarded. Also accredited by a nationally recognized accrediting agency or association that has been recognized by the US Dept of Education over the course of the grant. Foundations that raise private funds on behalf of community and technical colleges are eligible to apply during this cycle.

## **Community-Based Nonprofit Organizations:**

A nonprofit organization with tax-exempt status under section 501(c)(3) of the Internal Revenue Code. For the purposes of the Gable Grants program, community-based organizations operate in a state, regional or local capacity.

Note: The Gable Grants program funds national nonprofit organizations by invitation only. These organizations typically operate with a national or international entity and deliver programming at a state, regional or local level through chapters, members, or other affiliated independent organizations.



# Eligibility Criteria (Continued)

Currently directly provide post-secondary skilled trades education programs with an emphasis in one of the following areas:

- Appliance repair
- Carpentry/construction
- Electrical
- Heating, Ventilation & Air Conditioning
- Plumbing

Priority on programs that recruit, train and prepare one or more groups including (but not limited to) the following:

- Women
- People of color
- Individuals living in rural areas
- Individuals who are justice-involved or participating in second chance programs



# Funding Guidelines

## AMOUNT

Needs-based and range between **\$100,000 and \$1,000,000**

## SUPPORT

Program-related expenses for skilled long-term, scalable trades workforce development including **instructors, program materials, training space, equipment, measurement, capacity building, etc.**

## IMPACT

Grantees are required to measure impact and provide periodic reporting throughout the grant funding period

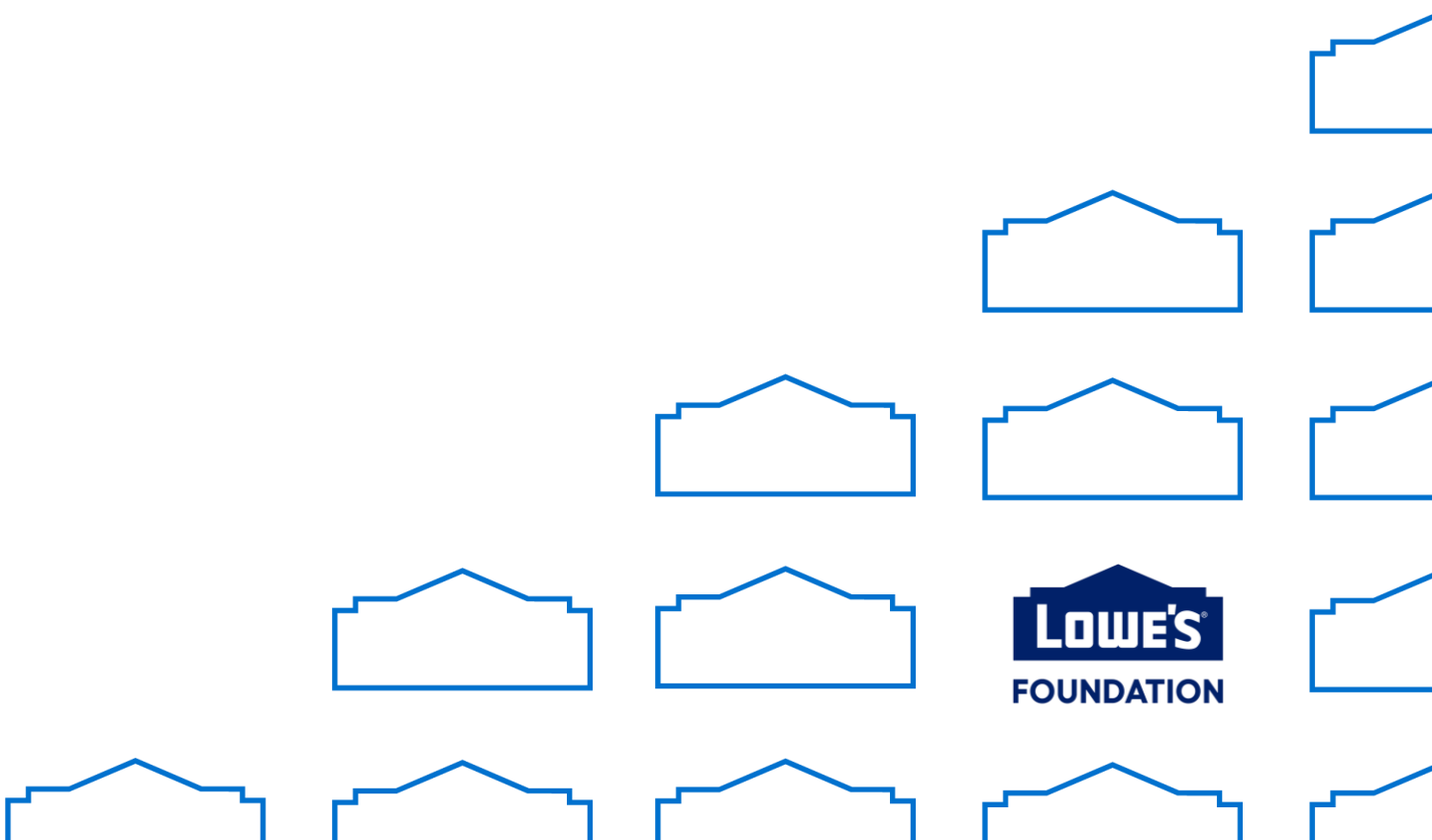




# Selection Process



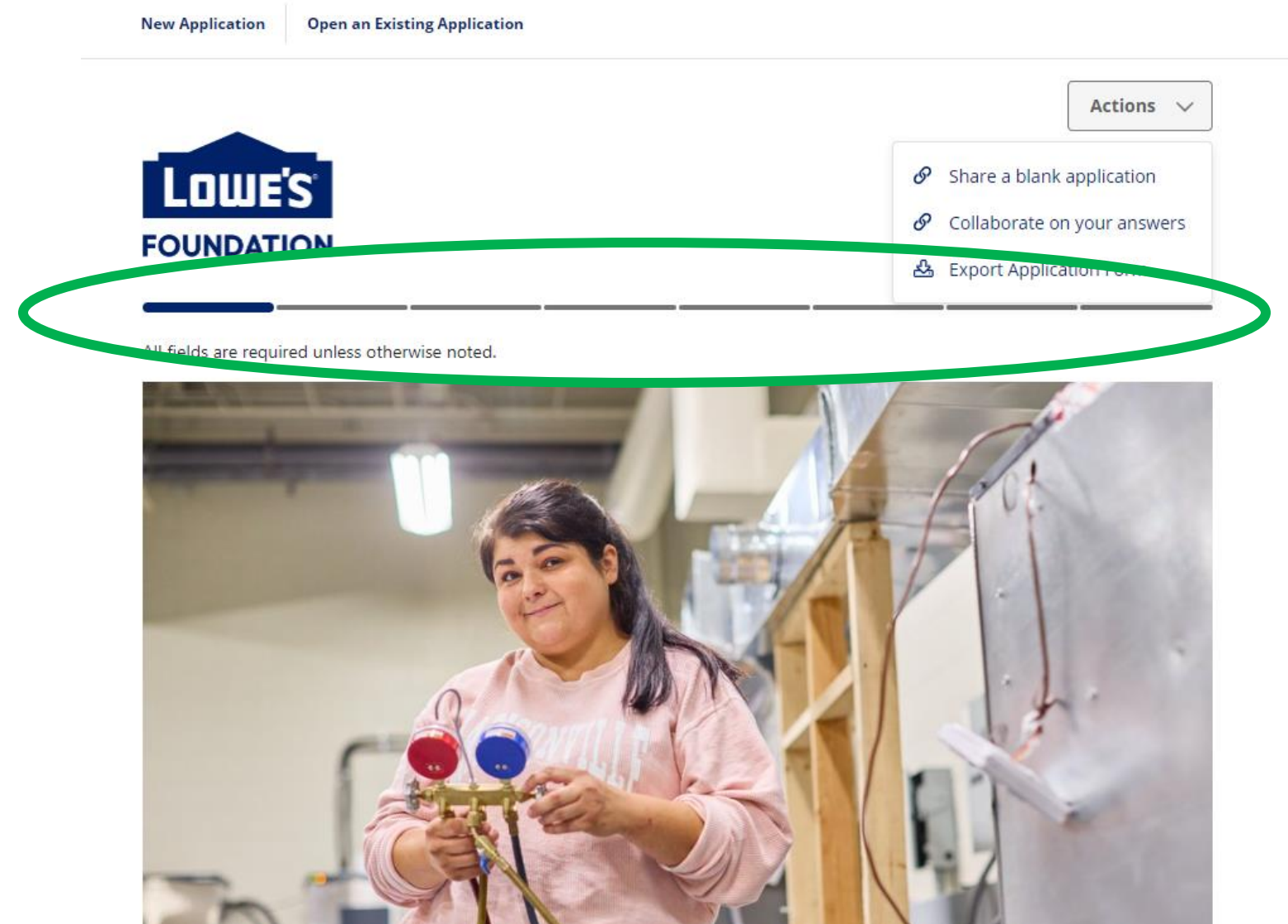
# Application Portal



# Getting Started

You can preview all sections of the online application by clicking on the gray tabs at the top of the screen

This function allows you to navigate to any page of the application webform without filling in the required information to proceed



# Export Blank Application Form

You can export a blank application in pdf format by clicking on the "Actions" drop down and selecting "Export Application Form"

## For Review and Informational Purposes Only

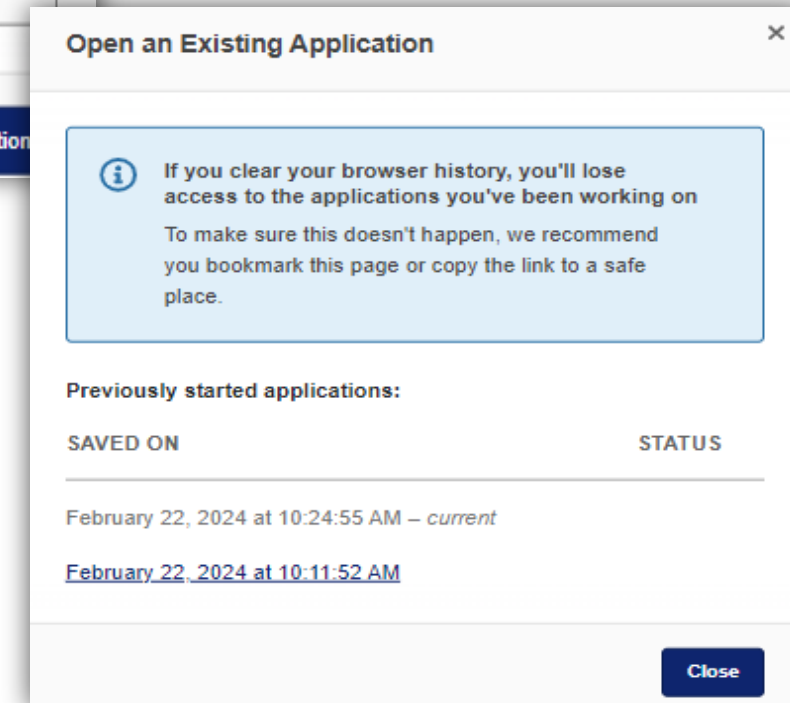
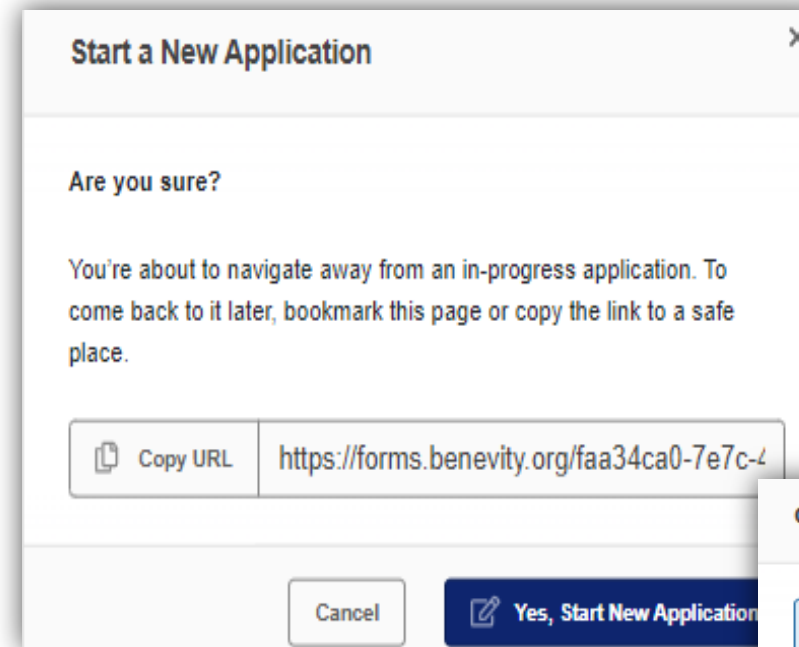
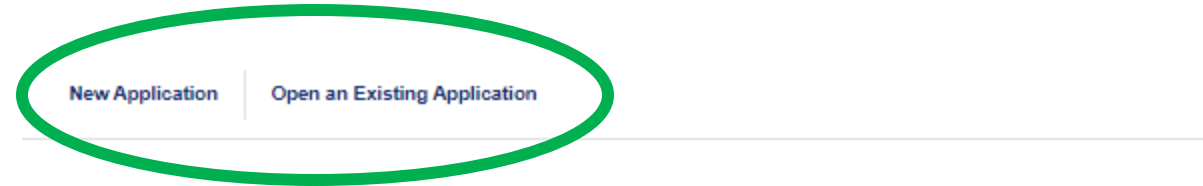
Please note that this PDF is provided solely for reviewing the content and format of the form. It is not an official submission method for grant requests. While this document is designed to give you a clear approximation of the form, it may not be identical to the actual online version. Users are advised to refer to the official website for submission and the most current form information.



# New & Existing Applications

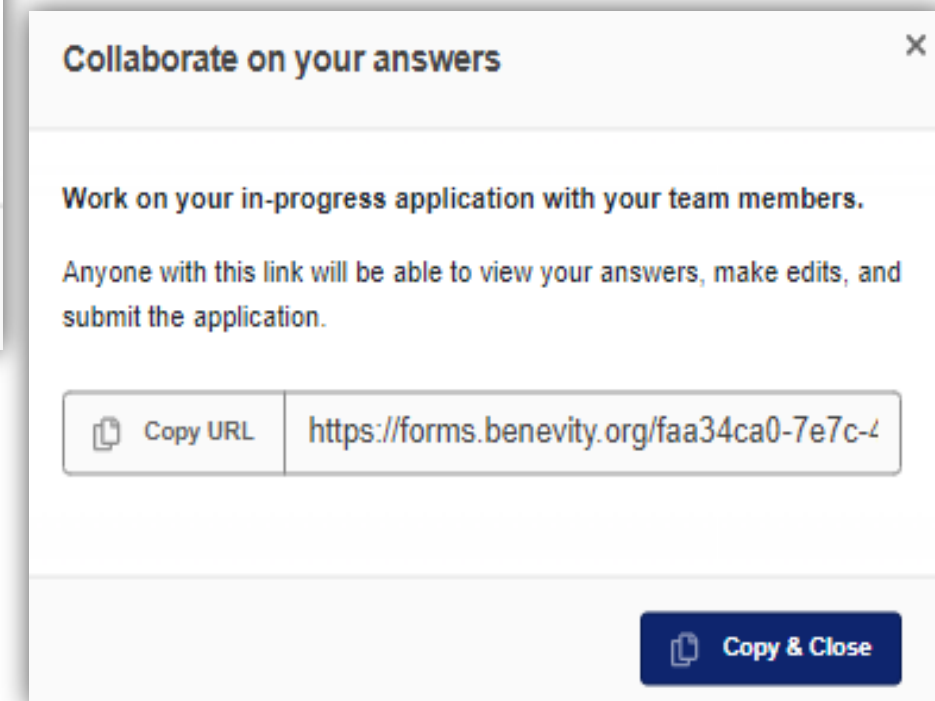
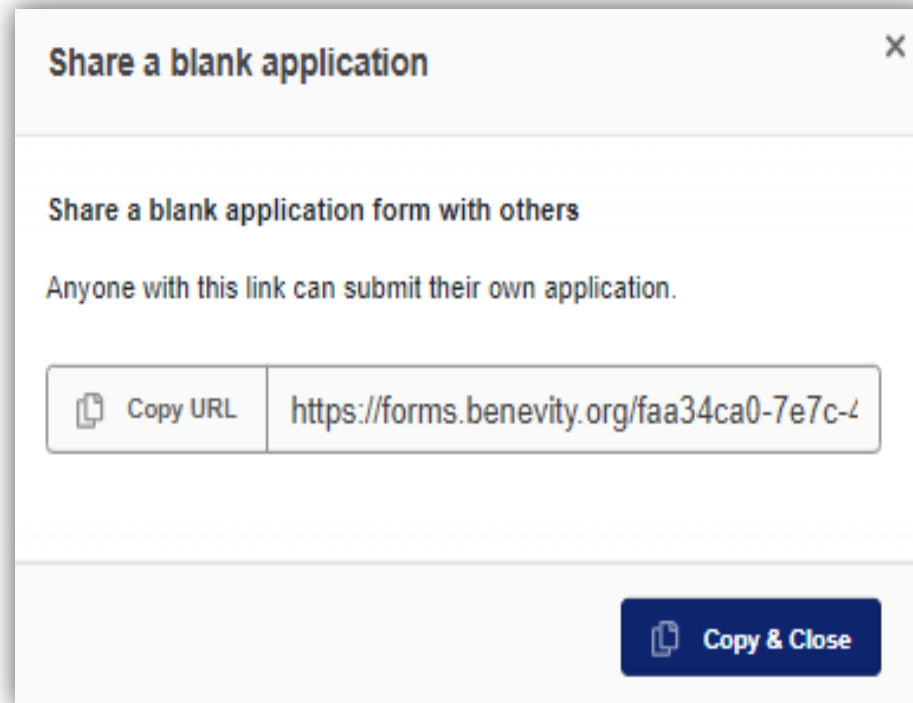
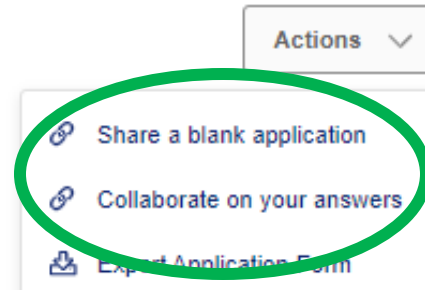
Your web browser will automatically remember your history and show your most recent application form

You have the option to create a **“new application”** or view a previous application by selecting **“open an existing application”**



# Share & Collaborate

You can **share** a blank application and **collaborate** on your answers with others in your organization by clicking on the “Actions” drop down



# Application Categories

There are 6 sections of the application

All fields are required to advance through the form

## Eligibility Criteria

- Criteria is built into the system to ensure eligibility for the applicable cycle

## Contact Information

- All notifications will be sent to the primary contact from [noreply.grants@benevity.com](mailto:noreply.grants@benevity.com)

## Skilled Trades Programming

- Specific to your programming and funding needs

## Results / Evaluation

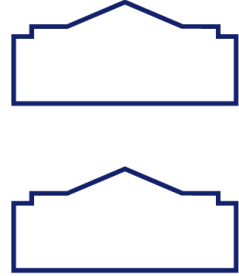
- Program completions and measurement of impact

## Organization Overview

- Organization specific data including general overview, mission and leadership

## Consent

- Acceptance of program terms and conditions





# Application Submission

Once your application has been submitted you will see the green success notification

Please note you cannot make any changes or revisions once submitted

You can **print** or **save** the read-only version of your application that is displayed below the message



Success! Thank you for your submission.



*Primary contact will receive an email confirmation from "noreply.grants@benevity.com"*





# Foundation Resources and Support

## Stay Connected:

Follow, like, and share Lowe's Foundation social channels

## Visit Lowe's Foundation Website:

- Application Outline
- Eligibility Guidelines
- Frequently Asked Questions
- Fact Sheet & Skilled Trades Careers Benefits



@LoweFoundation



@Lowe's Foundation



@Lowe's Foundation



Lowe.com/Foundation



Foundation@lowes.com



# Thank You!



## FOUNDATION

